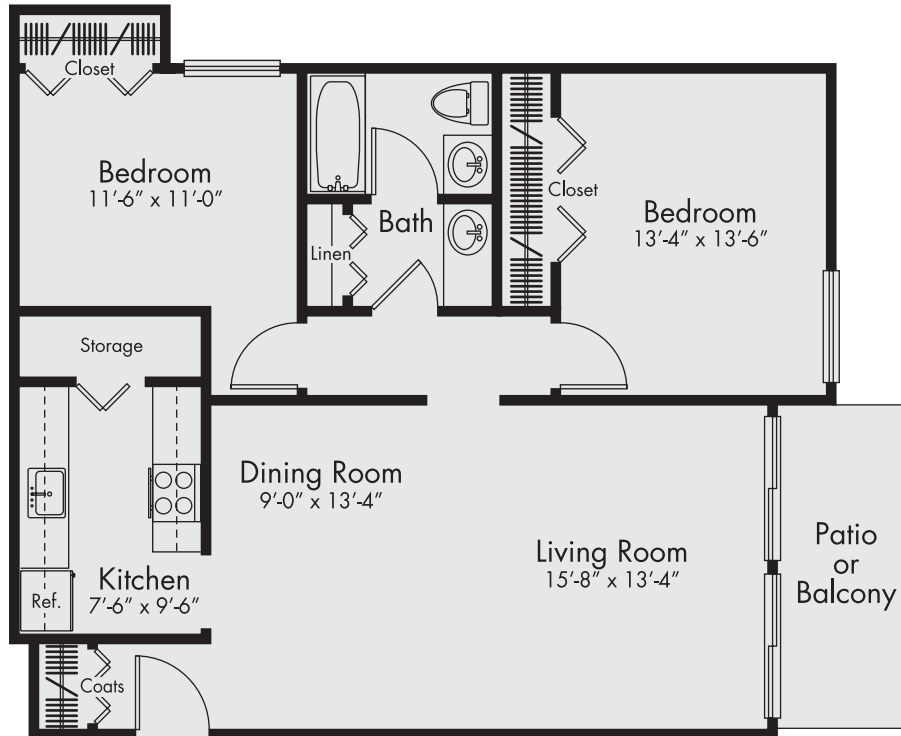


PARKVIEW VILLAGE

APARTMENTS



THE POINTE

2 Bedrooms // 1 Baths // Approx. 870 sf

The open concept living and dining rooms include access to a private, wall-to-wall patio or balcony. There is direct access to the adjacent galley kitchen with its large pantry for plenty of convenient storage. Both bedrooms include an oversized closet and abundant natural light. The central bath is compartmentalized with two vanities and an additional door to maximize privacy.

27489 Parkview Boulevard // Warren, Michigan 48092 // 586.751.8600 // Parkview@mailll.com // ParkviewVillageApts.com

We reserve the right to modify features, price, specifications and/or to change or discontinue models without notice or obligation. Floor plan dimensions are approximate. All information provided herein is subject to change at ownership's sole discretion. 011718

