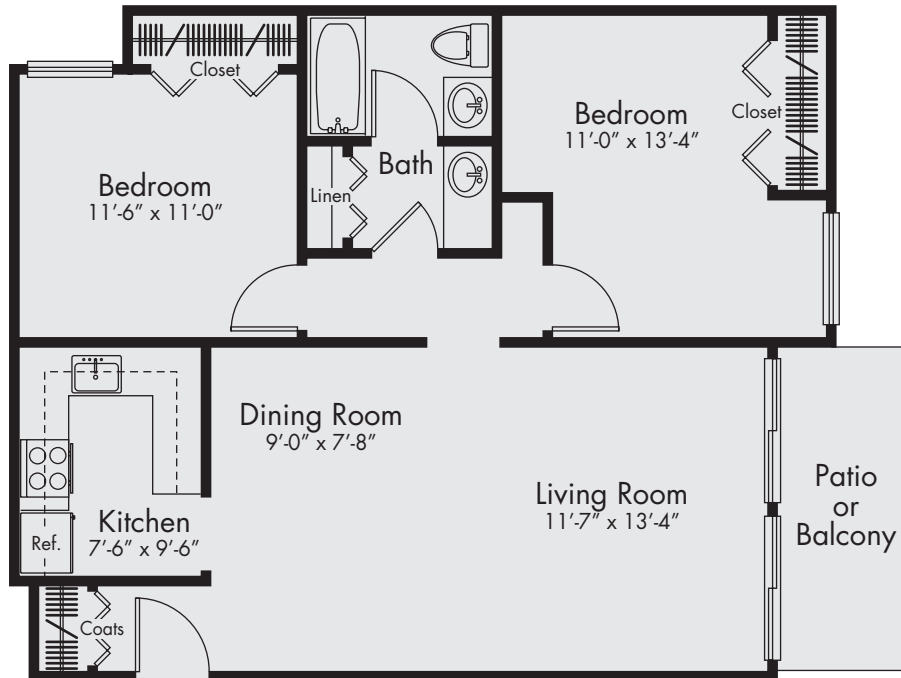


PARKVIEW VILLAGE

APARTMENTS



THE LYON

2 Bedrooms // 1 Bath // Approx. 870 sf

The open living and dining rooms include access to a private, wall-to-wall patio or balcony. The adjacent U-shaped kitchen provides plenty of cabinets and counter space. The bedrooms are separated by a central bath to enhance privacy. Both bedrooms include an oversized closet and abundant natural light.

27489 Parkview Boulevard // Warren, Michigan 48092 // 586.751.8600 // Parkview@maill.com // ParkviewVillageApts.com

We reserve the right to modify features, price, specifications and/or to change or discontinue models without notice or obligation. Floor plan dimensions are approximate. All information provided herein is subject to change at ownership's sole discretion. 011718

